

# Trendy

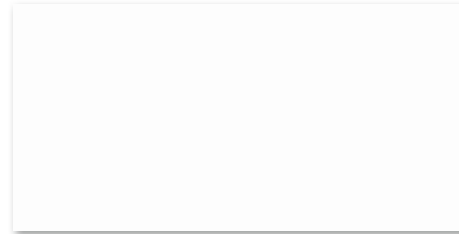


Produs / Product



Faianță rectificată / Rectified tile	60 x 30 x 0,8	EN 14411-2012, Annex K, BIII GL
Gresie porțelanată rectificată / Porcelain rectified tile	60 x 15 x 0,9	EN 14411-2012, Annex G, BIIa GL
Mozaic/Mosaic	30 x 30 x 0,8	A.T. nr. 003-04/485-2022

8	1,44	40	57,60	21,3	876
11	0,99	48	47,52	18,7	922
4 SET	0,36				



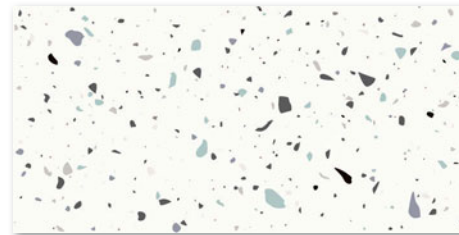
60 x 30



V1



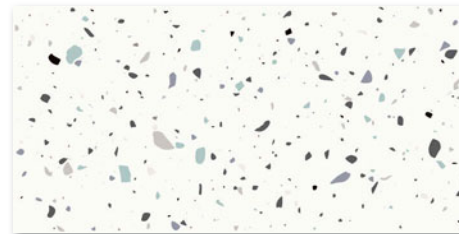
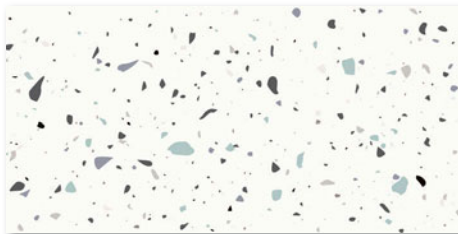
**1260-0105**  
ivoriu/ivory | mat/matt



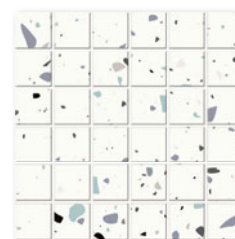
60 x 30



V2



**1260-0104**  
multicolor/multicolour | mat/matt



30 x 30



V2



**1600-0060**  
multicolor/multicolour | mat/matt  
SET = 1 folie PEI 4



60 x 15



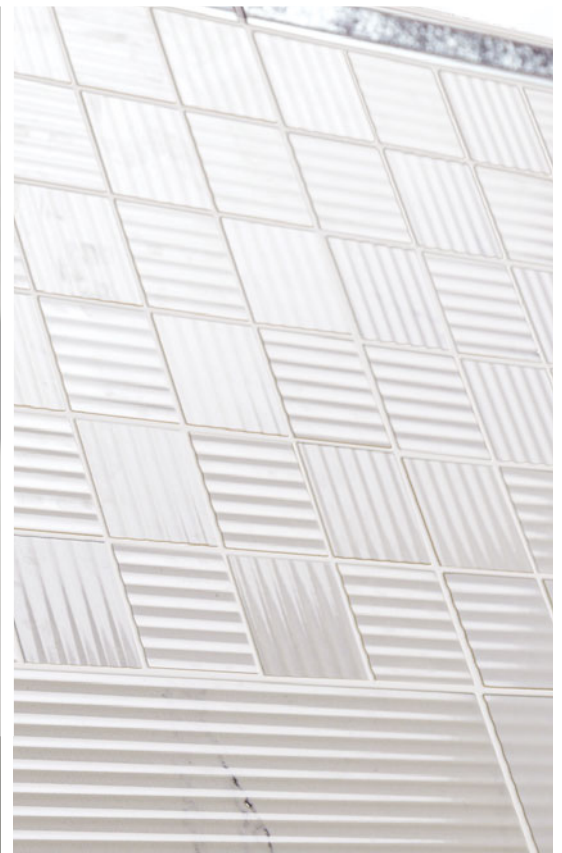
V3



**6463-0037 Rovere**  
maro/brown | mat/matt PEI 4



# Venice



Produs / Product								
Faianță rectificată / Rectified tile	60 x 30 x 1,0	EN 14411:2012, Annex K, BIII GL	6	1,08	40	43,20	20	825
Gresie porțelanată rectificată / Porcelain rectified tile	60 x 15 x 0,9	EN 14411:2012, Annex G, BIa GL	11	0,99	48	47,52	18,7	922
Brâu / Listel	60 x 3 x 1,0	EN 14411:2012, Annex G, BIa GL	6	0,11				
Mozaic / Mosaic	30 x 30 x 0,9	A.T. nr. 003-04/485-2022	4 SET	0,36				



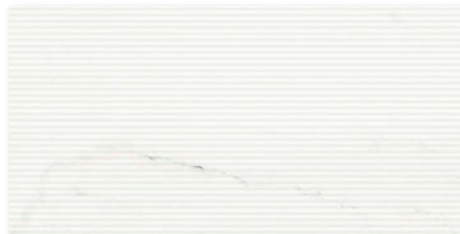
60 x 30



V3



**1260-0078**  
alb/white | lucios/glossy



**1260-0079**  
alb/white | lucios/glossy



**6606-0036 Metallic PEI 3**

60 x 3



**1600-0059**  
alb/white | lucios/glossy  
SET = 1 folie

30 x 30



V3



**6463-0042 Legno Classico**  
maro-gri/brown-gray | mat/matt PEI 4

60 x 15



V3

