

Legno Rustico



RECOMANDARE / RECOMMENDATION

Pentru a obține un efect natural al suprafeței, precum imaginea prezentată mai sus, vă sugerăm ca înainte de a placa o suprafață să selectați plăci din mai multe cutii și să le mixați între ele sau chiar să încercați rotirea plăcilor cu 180°.

Before laying the tiles, we suggest you select from several boxes and arrange them as illustrated in the inspiration photo above or consult the www.cesarom.ro website and mix the tiles to achieve the required result including turning them by 180°.

Produs / Product



Gresie porțelanată rectificată / Porcelain rectified tile

60 x 15 x 0,9

EN 14411:2012, Annex G, Bla GL

11

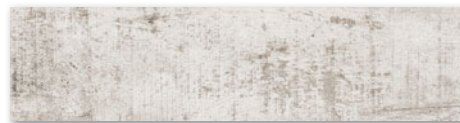
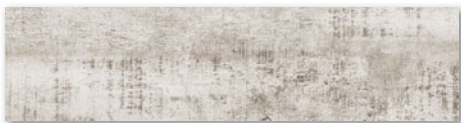
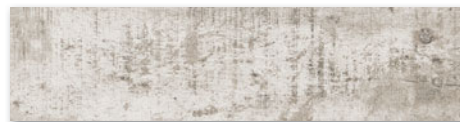
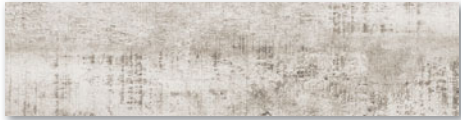
0,99

48

47,52

18,7

922

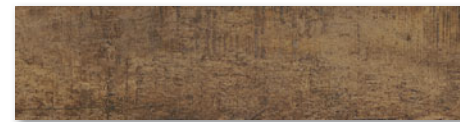
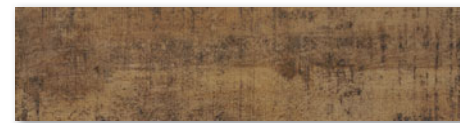
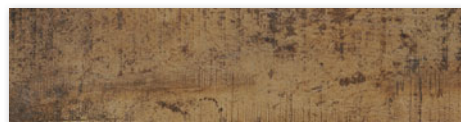


6463-0049
alb/white | mat/matt PEI 4

60 x 15

V3

safe+



6463-0050
maro/brown | mat/matt PEI 4