








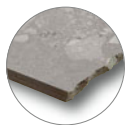


Înainte de a monta plăcile, vă sugerăm să selectați din mai multe cutii, să amestecați plăcile (inclusiv prin rotirea lor cu 180°) și să le aranjați așa cum este ilustrat în fotografia de inspirație sau să consultați site-ul [www.cesarom.ro](http://www.cesarom.ro).

Before laying the tiles, we suggest you select from several cartons and arrange them as illustrated in the inspiration photo documentation in RAKO catalogues or website [www.cesarom.ro](http://www.cesarom.ro).

There are two recommended laying patterns to choose from: one is a strictly one-way oriented design, and the other resembles a chessboard look achieved through a regular 90° turn tiling pattern.

produs / product											
gresie porțelanată / porcelain tile	10×10	98×98×9	EN 14411 - G Bia	11	11	1,00	56	56,00	19,2	19,2	1 125
mozaic set 30×30 cm / mosaic sheet 30×30 cm	5×5	48×48×8	STO ě. 030 - 059826	4	11	0,36	-	-	5,2	14,8	-
treaptă / step tile	60×60	598×597×9	STO ě. 030 - 059824	3	2,8	1,08	-	-	20,7	19,2	-
treaptă / step tile	40×80	398×798×10	STO ě. 030 - 059824	2	3,1	0,64	-	-	14,1	21,9	-
plintă / skirting plinth	80×9,5	798×95×10	STO ě. 030 - 059824	10	13,2	0,76	-	-	16,7	21,9	-
plintă / skirting plinth	60×7,2	598×72×9	STO ě. 030 - 059824	14	23,1	0,60	-	-	11,5	19,2	-
treaptă specială / special step tile	40×80	398×798×10	STO ě. 030 - 059824	2	-	-	-	-	-	-	-



10x10 | 30x30



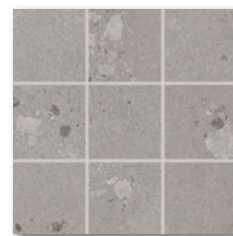
DAK11858 (SET)  
PEI 5 ○ 94 | m<sup>2</sup>  
mat | matt  
color **dune**  
bej / beige



DAK11855 (SET)  
PEI 5 ○ 94 | m<sup>2</sup>  
mat | matt  
color **paper**  
gri deschis / light grey



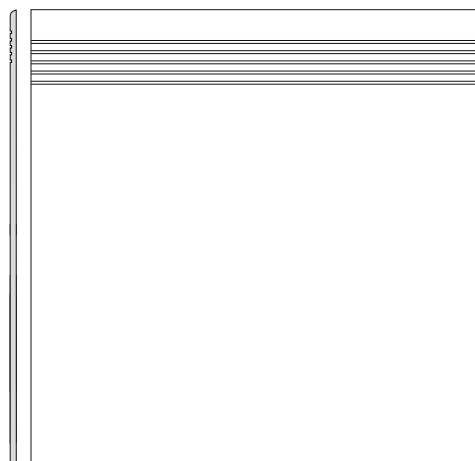
DAK11856 (SET)  
PEI 5 ○ 94 | m<sup>2</sup>  
mat | matt  
color **cement**  
gri / grey



DAK11857 (SET)  
PEI 4 ○ 94 | m<sup>2</sup>  
mat | matt  
color **ash**  
gri închis / dark grey



DCP84855 color **paper** | gri deschis / light grey  
DCP84856 color **cement** | gri / grey  
DCP84857 color **ash** | gri închis / dark grey  
DCP84858 color **dune** | bej / beige  
PEI 4-5 ○ 78 | ks  
mat | matt



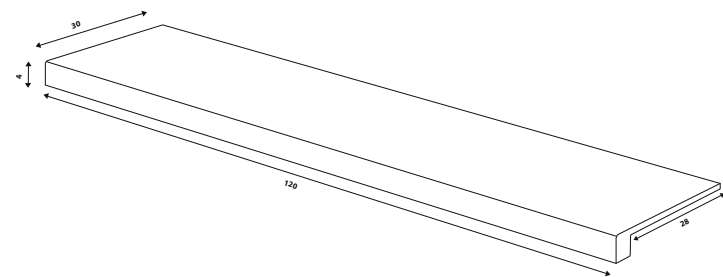
DCP62855 color **paper** | gri deschis / light grey  
DCP62856 color **cement** | gri / grey  
DCP62857 color **ash** | gri închis / dark grey  
DCP62858 color **dune** | bej / beige  
PEI 4-5 ○ 76 | ks  
mat | matt



DSA89855 color **paper** | gri deschis / light grey  
DSA89856 color **cement** | gri / grey  
DSA89857 color **ash** | gri închis / dark grey  
DSA89858 color **dune** | bej / beige  
○ 72 | ks  
mat | matt



DSAS3855 color **paper** | gri deschis / light grey  
DSAS3856 color **cement** | gri / grey  
DSAS3857 color **ash** | gri închis / dark grey  
DSAS3858 color **dune** | bej / beige  
○ 56 | ks  
mat | matt



DCF84855 color **paper** | gri deschis / light grey  
DCF84856 color **cement** | gri / grey  
DCF84857 color **ash** | gri închis / dark grey  
DCF84858 color **dune** | bej / beige  
PEI 4-5 ○ 108 | ks  
mat | matt

40x80

60x60



News

Home

RAKO

80x9,5

60x7,2

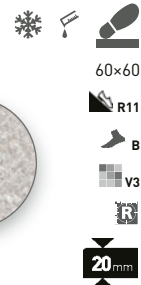
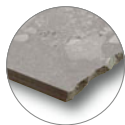


40x80



**castone** outdoor

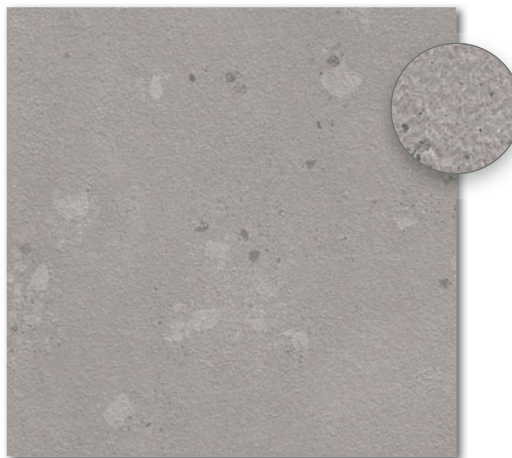




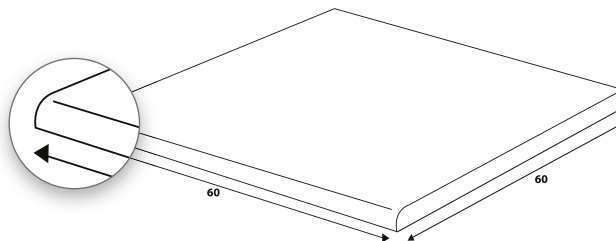
6461-0315 / DAR66858  
 PEI 5 ○ 89 | m<sup>2</sup>  
 mat | matt  
 color **dune**  
 bej / beige



6461-0313 / DAR66856  
 PEI 5 ○ 89 | m<sup>2</sup>  
 mat | matt  
 color **cement**  
 gri / grey



6461-0314 / DAR66857  
 PEI 4 ○ 89 | m<sup>2</sup>  
 mat | matt  
 color **ash**  
 gri închis / dark grey



DCH66856 color **cement** | gri / grey  
 DCH66857 color **ash** | bej închis / dark grey  
 DCH66858 color **dune** | bej / beige  
 PEI 4-5 ○ 92 | ks  
 mat | matt

produs / product



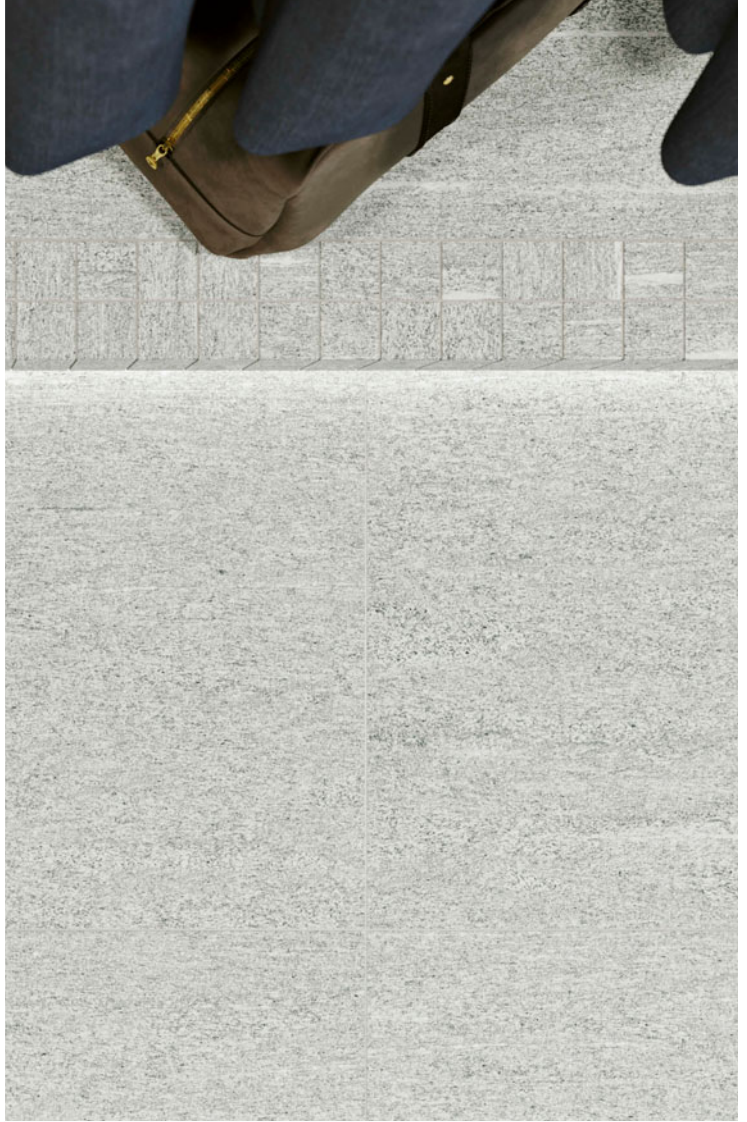
gresie porțelanată / porcelain tile  
 treaptă / step tile

60×60 598-598×20  
 60×60 598-598×20

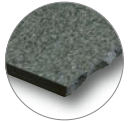
EN 14411 - G Bla  
 STO c. 030 - 059824

2	2,8	0,72	30	21,60	32,0	44,4	985
2	-	-	-	-	32,0	-	-

vals







60x120

R10

B

V3



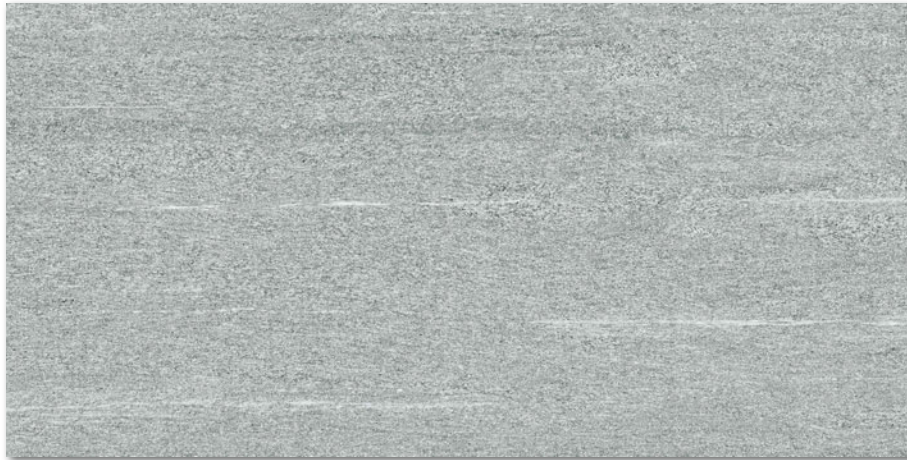
6493-0063 / DAKV1846

PEI 5 ○ 87 l m<sup>2</sup>

mat | matt

color **fog**

gri deschis / light grey



6493-0064 / DAKV1847

PEI 4 ○ 87 l m<sup>2</sup>

mat | matt

color **natural**

gri / grey



6493-0065 / DAKV1848

PEI 4 ○ 87 l m<sup>2</sup>

mat | matt

color **pepper**

gri închis / dark grey

produs / product



EN



ks/m<sup>2</sup>

m<sup>2</sup>



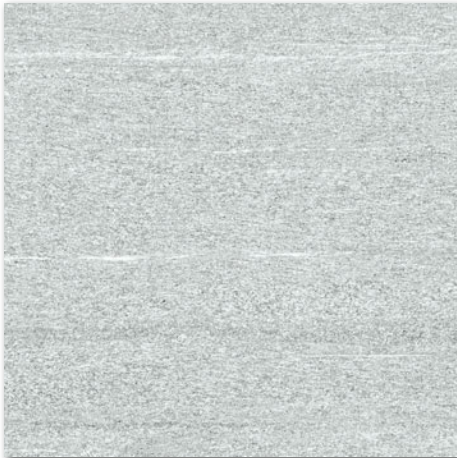
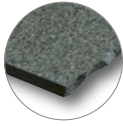
m<sup>2</sup>

kg

kg/m<sup>2</sup>

brutto kg

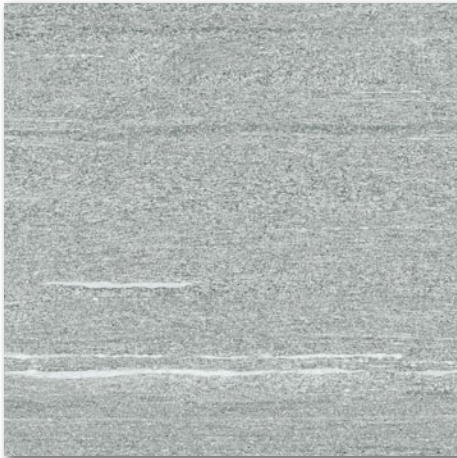
produs / product	60x120	60x60	60x15/10/5	598x1198x10	598x598x9	598x148/98/48x9	EN	2	4	15	1,4	2,8	16,7	1,44	27	32	36	38,88	46,08	32,7	27,6	17,5	22,7	19,2	655	908	908
gresie porțelanată / porcelain tile				EN 14411 - G Bla																							
gresie porțelanată / porcelain tile				EN 14411 - G Bla																							
gresie porțelanată / porcelain tile				EN 14411 - G Bla																							



6461-0299 / DAK62846  
 PEI 5 ○ 80 l m<sup>2</sup>  
 mat | matt  
 color **fog**  
 gri deschis / light grey



DAKSV846  
 PEI 5 ○ 94 l m<sup>2</sup>  
 mat | matt



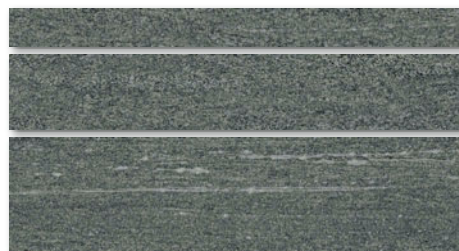
6461-0300 / DAK62847  
 PEI 4 ○ 80 l m<sup>2</sup>  
 mat | matt  
 color **natural**  
 gri / grey



DAKSV847  
 PEI 4 ○ 94 l m<sup>2</sup>  
 mat | matt



6461-0301 / DAK62848  
 PEI 4 ○ 80 l m<sup>2</sup>  
 mat | matt  
 color **pepper**  
 gri închis / dark grey



DAKSV848  
 PEI 4 ○ 94 l m<sup>2</sup>  
 mat / matt