



6461-0232 / DAK63795
 PEI 5 ○ 88 | m²
 mat | matt | ■ V4
 alb-gri / white-grey



6461-0236 / DAK63796
 PEI 4 ○ 88 | m²
 mat | matt | ■ V4
 gri / grey



6461-0235 / DAK63797
 PEI 5 ○ 88 | m²
 mat | matt | ■ V4
 bej / beige

produs / product



gresie portelanată / porcelain tile
 gresie portelanată / porcelain tile

60×60
 60×120

598×598×10
 598×1198×10

EN 14411 - G Bla
 EN 14411 - G Bla

3
 2

2,8
 1,4

1,08
 1,44

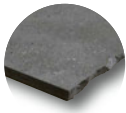
32
 27

34,56
 38,88

23,7
 32,7

21,9
 22,7

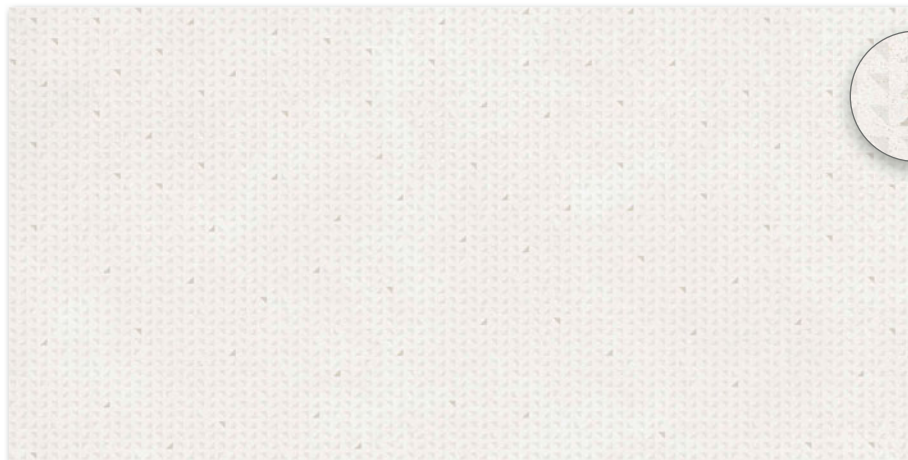
782
 908



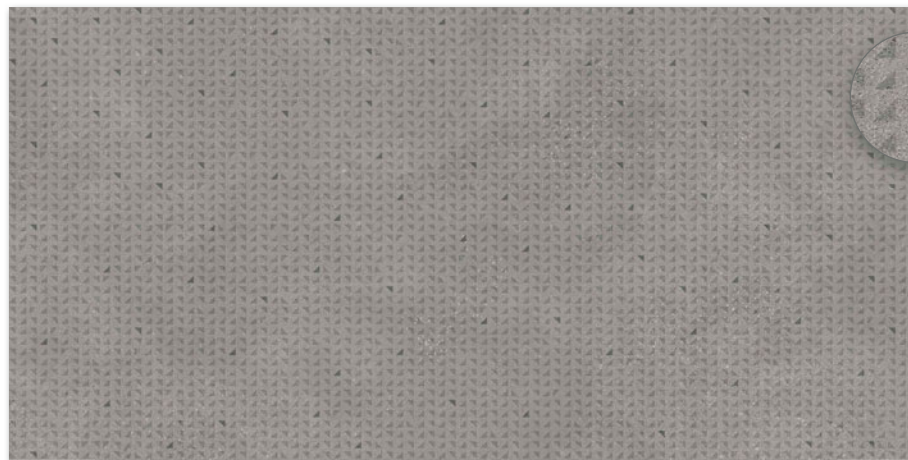
60×60
60×120

R10

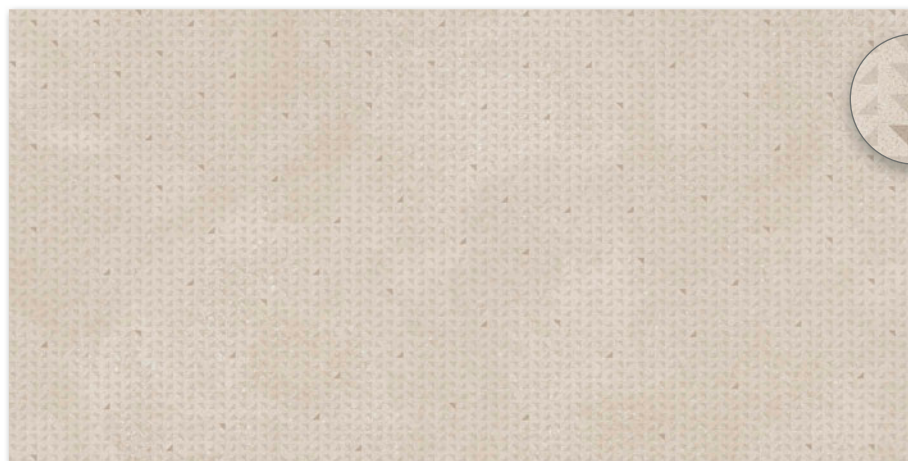
B



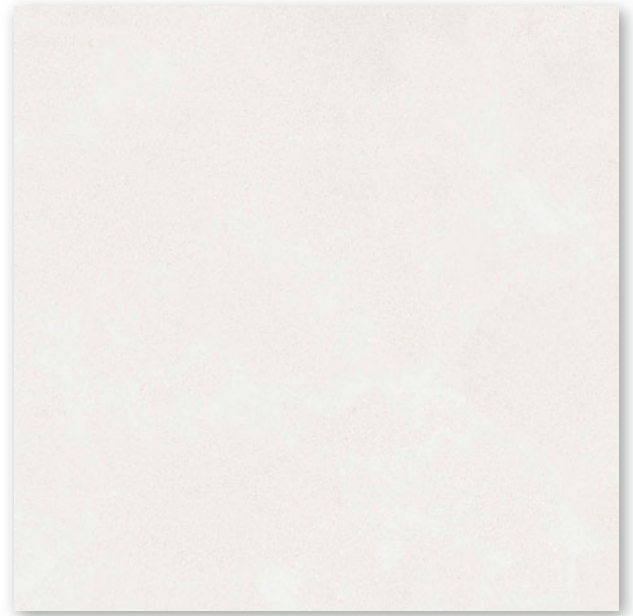
6493-0033 / DAKV1795
PEI 5 ○ 90 l m²
mat | matt |  V3
alb-gri / white-grey



6493-0034 / DAKV1796
PEI 4 ○ 90 l m²
mat | matt |  V3
gri / grey



6493-0035 / DAKV1797
PEI 5 ○ 90 l m²
mat | matt |  V3
bej / beige



6485-0021 / DAK81790
 PEI 5
 mat | matt
 alb-gri / white-gray

produs / product



80×80
80×9,5



798×798×10
798×95×10



EN 14411:2016, annex G Bla GL
STO ě. 030 - 059824



2
10



1,6
13,2



1,28
0,76



42
-



53,76
-



28,0
16,7



21,9
21,9



1 202
-

gresie porțelanată / porcelain tile
plintă / skirting plinth



6485-0023 / DAK81791
PEI 4
mat | matt
gri / gray



6485-0020 / DAK81792
PEI 4
mat | matt
negru / black

80x80



R10



B



V3



6485-0024 / DAK81793
PEI 5
mat | matt
bej deschis / light beige



6485-0018 / DAK81794
PEI 4
mat | matt
bej închis / dark beige

Home

RAKO



6708-0016 / DSA89790 alb-gri / white-gray
6708-0017 / DSA89791 gri / gray
6708-0018 / DSA89792 negru / black
6708-0019 / DSA89793 bej deschis / light beige
6708-0020 / DSA89794 bej închis / dark beige
mat | matt

80x9.5



V3





60x60



6461-0230 / DAK63790
PEI 5 R10 mat | matt
alb-gri / white-gray

6461-0270 / DAF63790
PEI 5 R11 mat | matt
alb-gri / white-gray



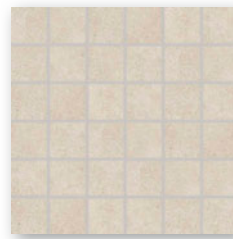
6461-0228 / DAK63793
PEI 5 R10 mat | matt
bej deschis / light beige

6461-0274 / DAF63793
PEI 5 R11 mat | matt
bej deschis / light beige

30x30



6100-0083 / DDM06790
PEI 5 mat | matt alb-gri / white-gray



6100-0099 / DDM06793
PEI 5 mat | matt bej deschis / light beige

60x60



6461-0231 / DAK63791
PEI 4 R10 mat | matt
gri / gray

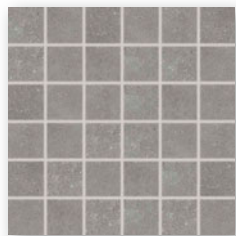
6461-0272 / DAF63791
PEI 4 R11 mat | matt
gri / gray



6461-0237 / DAK63792
PEI 4 R10 mat | matt
negru / black

6461-0273 / DAF63792
PEI 4 R11 mat | matt
negru / black

30x30



6100-0103 / DDM06791
PEI 4 mat | matt gri / gray



6100-0098 / DDM06792
PEI 4 mat | matt negru / black

produs / product



EN



pcs/m²



m³




kg/m²

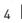


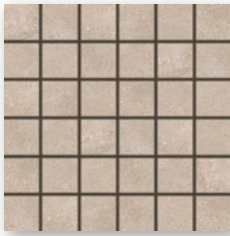
brutto kg

| produs / product | cm | mm | EN | pcs/m ² | m ³ | kg | kg/m ² | brutto kg |
|-------------------------------------|--------|------------|-------------------------------|--------------------|----------------|------|-------------------|-----------|
| gresie portelanată / porcelain tile | 60x60 | 598x598x10 | EN 14411:2016, annex G Bla GL | 3 | 2,8 | 1,08 | 32 | 34,56 |
| treaptă / step tile | 30x60 | 298x598x10 | STO ě. 030 - 059824 | 6 | 5,6 | 1,08 | 40 | - |
| plintă / skirting plinth | 60x9,5 | 598x95x10 | STO ě. 030 - 059824 | 13 | 17,5 | 0,74 | - | 16,2 |
| mozaic / mosaic sheet 30x30 cm | 5x5 | 48x48x10 | EN 14411:2016, annex G Bla GL | 3 | 11 | 0,27 | - | 5,9 |

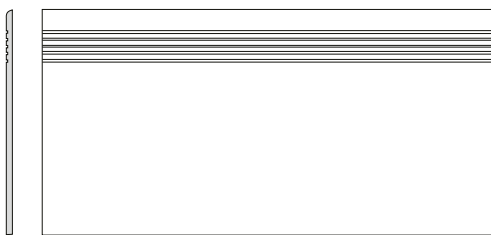


6461-0239 / DAK63794
PEI 4  R10 mat | matt
bej închis / dark beige

6461-0275 / DAF63794
PEI 4  R11 mat | matt
bej închis / dark beige



6100-0104 / DDM06794
PEI 4 mat | matt bej închis / dark beige



30x60



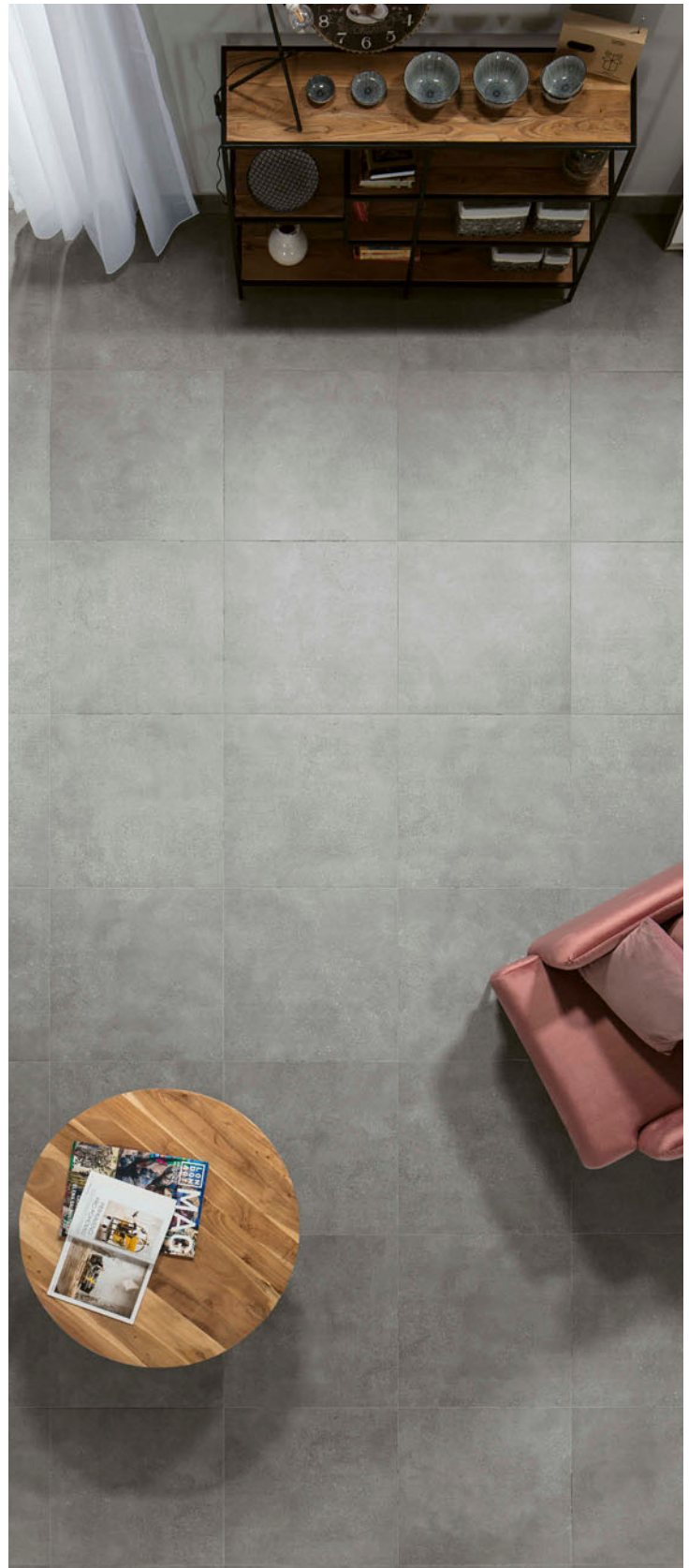
6860-0048 / DCPSE790 alb-gri / white-gray
6860-0041 / DCPSE791 gri / gray
6860-0057 / DCPSE792 negru / black
6860-0039 / DCPSE793 bej deschis / light beige
6860-0056 / DCPSE794 bej închis / dark beige
PEI 4-5
mat | matt



60x9,5



6706-0088 / DSAS4790 alb-gri / white-gray
6706-0083 / DSAS4791 gri / gray
6706-0109 / DSAS4792 negru / black
6706-0071 / DSAS4793 bej deschis / light beige
6706-0110 / DSAS4794 bej închis / dark beige
mat | matt



Înainte de a monta plăcile, vă sugerăm să selectați din mai multe cutii, să amestecați plăcile (inclusiv prin rotirea lor cu 180°) și să le aranjați așa cum este ilustrat în fotografia de inspirație sau să consultați site-ul www.cesarom.ro.

Before laying the tiles, we suggest you select from several cartons and arrange them as illustrated in the inspiration photo documentation in RAKO catalogues or website www.cesarom.ro. There are two recommended laying patterns to choose from: one is a strictly one-way oriented design, and the other resembles a chessboard look achieved through a regular 90° turn tiling pattern.