



produs / product



EN



pcs/m²



m²

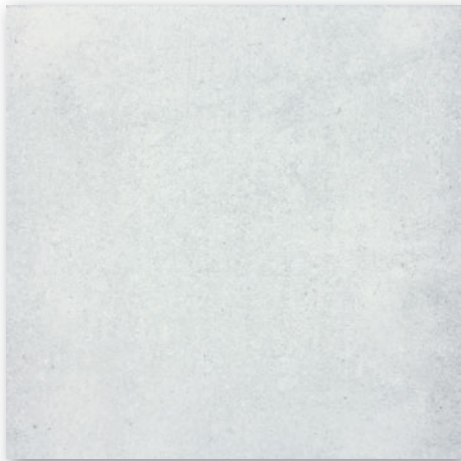


kg/m²



brutto kg

gresie portelanată porcelain tile	60x60	598x598x10	EN 14411:2016, annex G Bla GL	3	2,8	1,08	32	34,56	24,9	23,0	820
mozaic set 5x5 cm / mosaic sheet 5x5 cm	30x30	48x48x10	EN 14411:2016, annex G Bla GL	3	11	0,27	-	-	5,8	21,5	-
treaptă I step tile	30x60	298x598x10	STO c. 030 - 059824	6	5,6	1,08	40	-	23,7	21,9	971

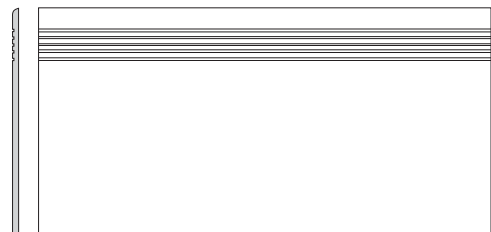


6461-0165 / DAK63660
 PEI 5
 mat | matt
 gri deschis / light gray



6461-0156 / DAK63661
 PEI 5
 mat | matt
 gri / gray

60x60



6860-0012 / DCPSE660 gri deschis / light gray
 6860-0019 / DCPSE661 gri / gray
 PEI 5
 mat | matt

30x60



6706-0064 / DSAS4660 gri deschis / light gray
 6706-0066 / DSAS4661 gri / gray
 mat | matt

60x9,5



6100-0110 / DDM06660 (SET)
 PEI 5 mat | matt
 gri deschis / light gray



6100-0052 / DDM06661 (SET)
 PEI 5 mat | matt
 gri / gray

30x30

