

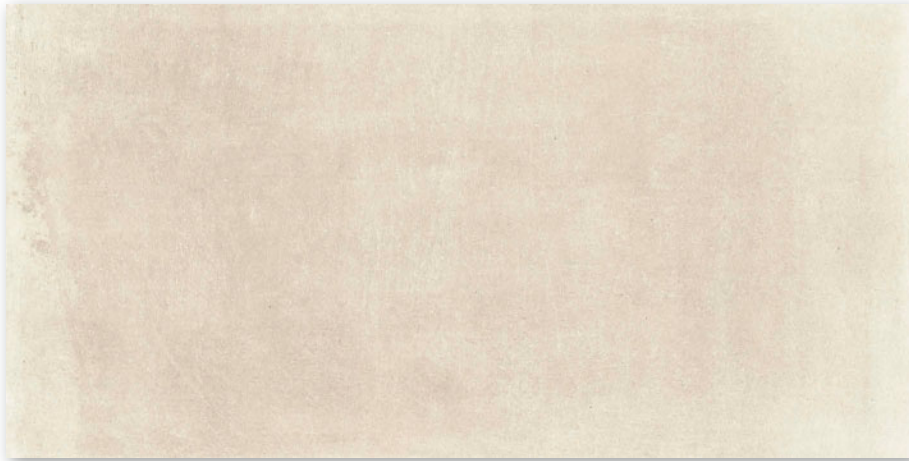


60x120

R9

A

V3



6493-0010 / DAKV1743  
PEI 5  
mat | matt  
bej / beige



6493-0007 / DAKV1740  
PEI 5  
mat | matt  
alb-gri / white-gray

produs / product



EN



pcs/m<sup>2</sup>

m<sup>3</sup>



m<sup>2</sup>



kg

kg/m<sup>2</sup>

brutto kg

gresie porțelanată / porcelain tile  
treaptă / step tile

60x120  
30x120

598x1198x10  
298x1198x10

EN 14411:2016, anex G Bla GL  
STO č. 030 - 059824

2  
5

1,4  
2,8

1,44  
1,80

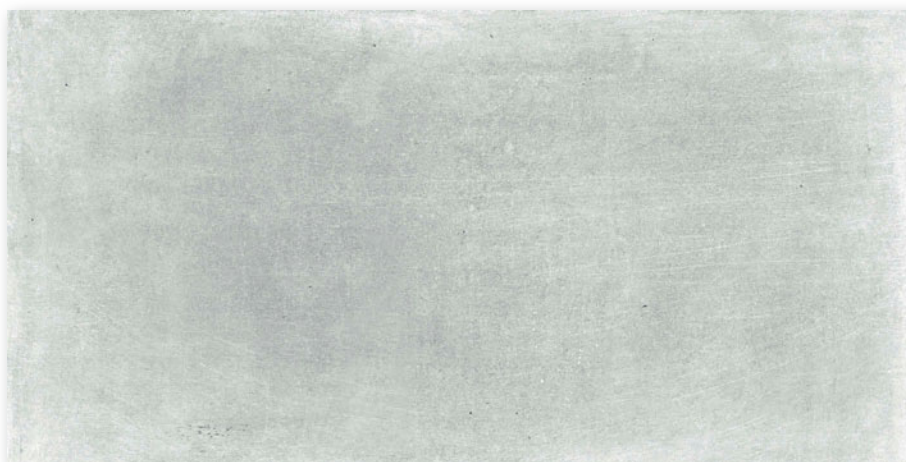
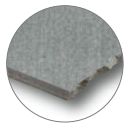
27  
-

38,88  
-

32,7  
40,9

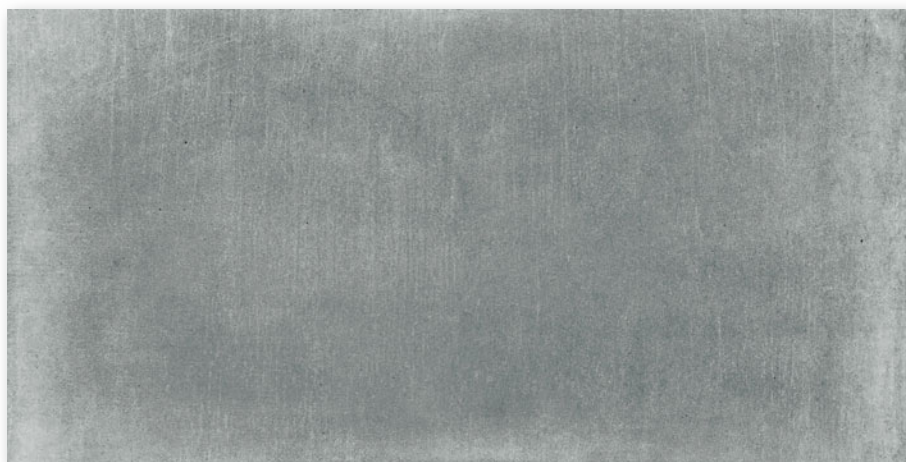
22,7  
22,7

908  
-



6493-0008 / DAKV1741  
PEI 5  
mat | matt  
gri / gray

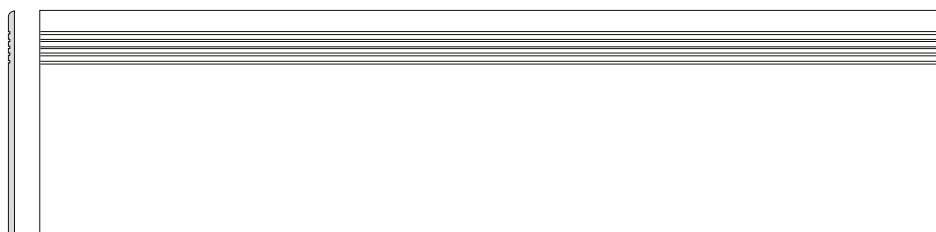
60x120



6493-0009 / DAKV1742  
PEI 4  
mat | matt  
gri închis / dark gray

Home

**RAKO**



6895-0016 / DCPVF740 alb-gri / white-grey  
6895-0017 / DCPVF741 gri / gray  
6895-0018 / DCPVF742 gri închis / dark gray  
6895-0019 / DCPVF743 bej / beige  
PEI 4-5  
mat | matt

30x120



Toate plăcile unui lot prezintă variații intenționate de nuanță. / All products of the entire batch show big deviations in shade difference.

Înainte de a monta plăcile, vă sugerăm să selectați din mai multe cutii, să amestecați plăcile (inclusiv prin rotirea lor cu 180°) și să le aranjați așa cum este ilustrat în fotografia de inspirație sau să consultați site-ul [www.cesarom.ro](http://www.cesarom.ro).

Before laying the tiles, we suggest you select from several cartons and arrange them as illustrated in the inspiration photo documentation in RAKO catalogues or website [www.cesarom.ro](http://www.cesarom.ro).

There are two recommended laying patterns to choose from: one is a strictly one-way oriented design, and the other resembles a chessboard look achieved through a regular 90° turn tiling pattern.



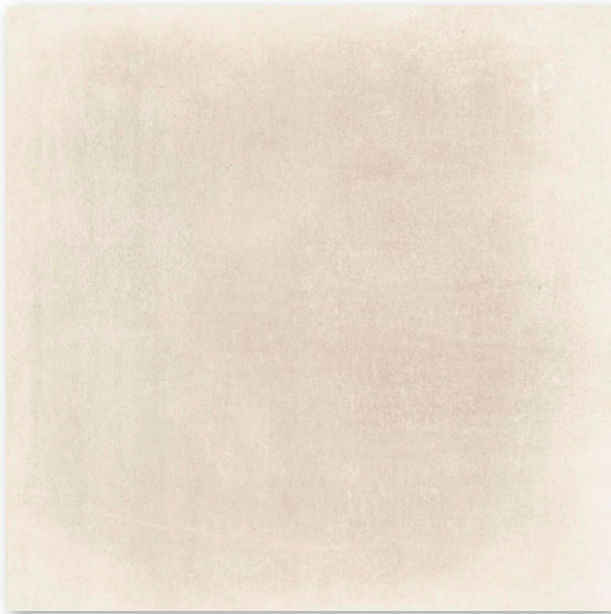
80x80

R9

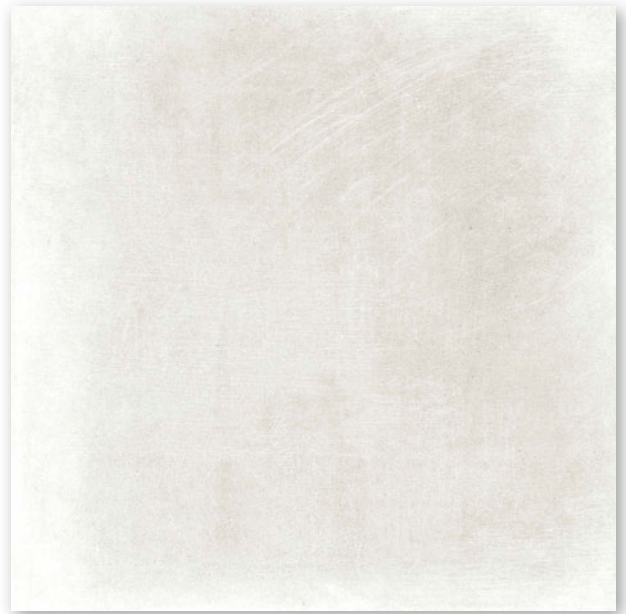
A

V3

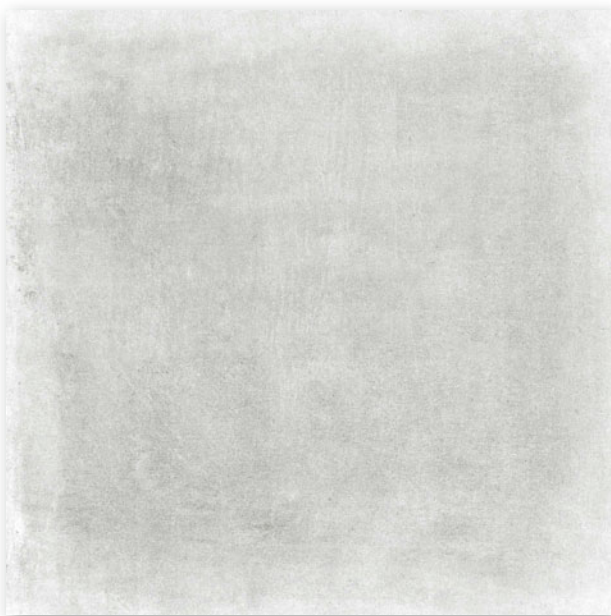
R



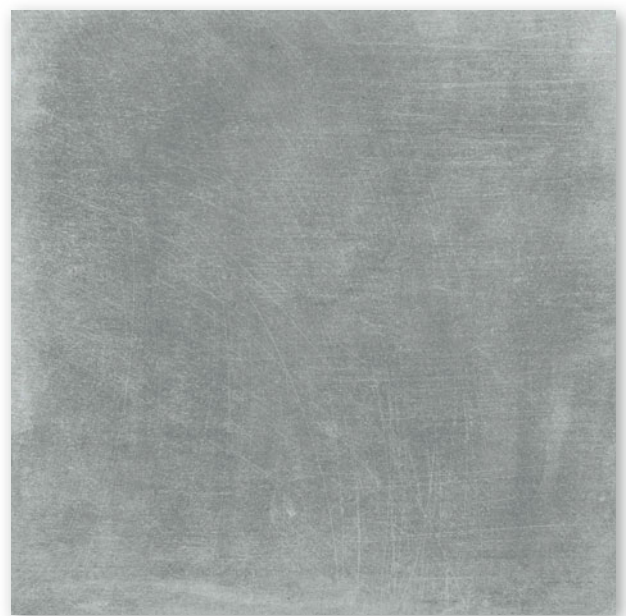
6485-0008 / DAK81743  
PEI 5  
mat | matt  
bej / beige



6485-0014 / DAK81740  
PEI 5  
mat | matt  
gri deschis / light gray



6485-0007 / DAK81741  
PEI 5  
mat | matt  
gri / gray



6485-0015 / DAK81742  
PEI 4  
mat | matt  
gri închis / dark gray

80x9,5

V3

R



6708-0009 / DSA89740 alb-gri / white-gray  
6708-0010 / DSA89741 gri / gray  
6708-0007 / DSA89742 gri închis / dark grey  
6708-0011 / DSA89743 bej / beige  
mat | matt

produs / product



EN



pcs/m<sup>2</sup>



m<sup>3</sup>



kg

kg/m<sup>2</sup>

brutto kg

gresie porțelanată / porcelain tile  
plintă / skirting plinth

80x80  
80x9,5

798x798x10  
798x95x10

EN 14411:2016, anex G Bla GL  
STO E. 030 - 059824

2  
10

1,6  
13,2

1,28  
0,76

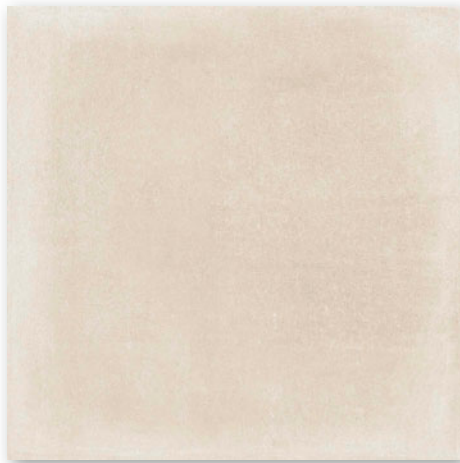
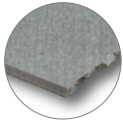
42  
-

53,76  
-

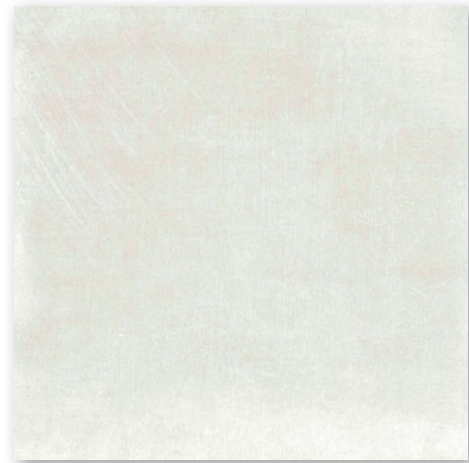
28,0  
16,7

21,9  
21,9

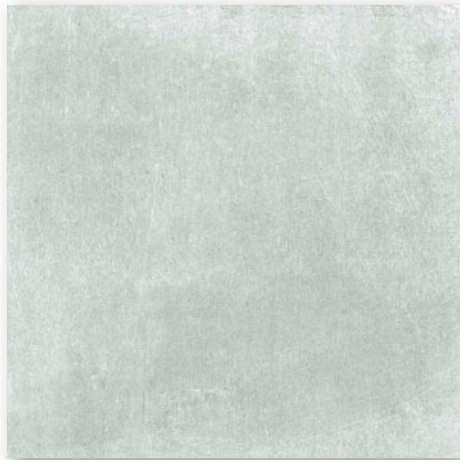
1 202  
-



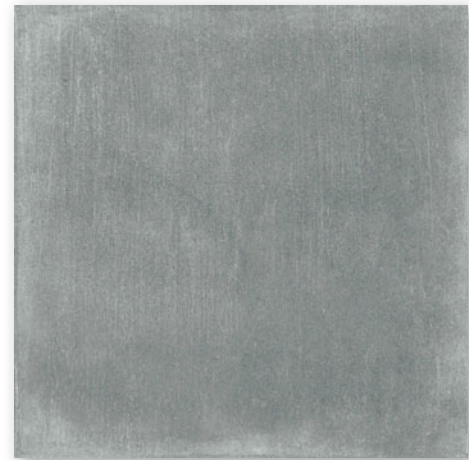
6461-0186 / DAK63743  
PEI 5  
mat | matt  
bej / beige



6461-0183 / DAK63740  
PEI 5  
mat | matt  
alb-gri / white-gray



6461-0184 / DAK63741  
PEI 5  
mat | matt  
gri / gray



6461-0185 / DAK63742  
PEI 4  
mat | matt  
gri închis / dark gray



6860-0054 / DCPSE740 alb-gri / white-gray  
6860-0030 / DCPSE741 gri / gray  
6860-0029 / DCPSE742 gri închis / dark gray  
6860-0055 / DCPSE743 bej / beige  
PEI 4-5  
mat | matt



6706-0099 / DSAS4740 alb-gri / white-gray  
6706-0065 / DSAS4741 gri / gray  
6706-0058 / DSAS4742 gri închis / dark gray  
6706-0100 / DSAS4743 bej / beige  
mat | matt



produs / product



produs / product	cm	mm	EN	pcs/m <sup>2</sup>	m <sup>2</sup>	m <sup>2</sup>	m <sup>2</sup>	m <sup>2</sup>	kg/m <sup>2</sup>	kg/m <sup>2</sup>	brutto kg
gresie porțelanată / porcelain tile	60x60	598x598x10	EN 14411:2016, annex G Bla GL	3	2,8	1,08	32	34,56	24,9	23,0	820
treaptă / step tile	30x60	298x598x10	STO č. 030 - 059824	6	5,6	1,08	40	-	23,7	21,9	971
plintă / skirting plinth	60x9,5	598x95x10	STO č. 030 - 059824	13	17,5	0,74	-	-	16,2	21,9	-