





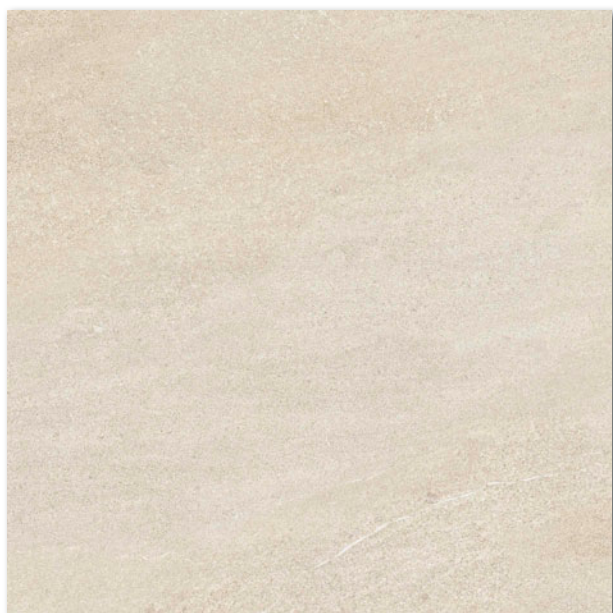


80x80

R9

A

V3



6485-0010 / DAK81735

PEI 5
mat | matt

bej / beige



6485-0011 / DAK81736

PEI 4
mat | matt

maro / brown

30x30



R10

B

V3



6132-0157 / DDM06735 (SET)

PEI 5 mat | matt

bej / beige



6132-0156 / DDM06736 (SET)

PEI 4 mat | matt

maro închis / dark brown

80x9.5

V3



6708-0012 / DSA89735 bej / beige
6708-0013 / DSA89736 maro / brown
6708-0014 / DSA89737 gri / gray
6708-0015 / DSA89738 gri închis / dark gray
6708-0008 / DSA89739 negru / black
mat | matt

produs / product



EN



pcs/m²

m³



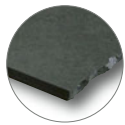
m²

kg

kg/m²

brutto kg

produs / product	80x80	798x798x10	EN	2	1,6	1,28	42	53,76	28,0	21,9	1202
gresie porțelanată / porcelain tile	80x80	798x798x10	EN 14411-2016, annex G Bla GL	2	1,6	1,28	42	53,76	28,0	21,9	1202
mozaic set 5x5 cm / mosaic sheet 5x5 cm	30x30	48x48x10	EN 14411-2016, annex G Bla GL	3	11	0,27	-	-	5,8	21,5	-
plintă / skirting plinth	80x9,5	798x95x10	STO E. 030 - 059824	10	13,2	0,76	-	-	16,7	21,9	-



6485-0012 / DAK81737
PEI 5
mat | matt
gri / gray

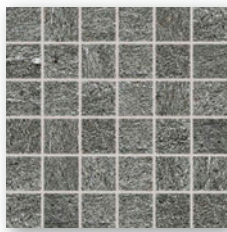


6485-0009 / DAK81738
PEI 4
mat | matt
gri închis / dark gray

- 80x80
-  R9
-  A
-  V3
-  R



6132-0155 / DDM06737 (SET)
PEI 5 mat | matt
gri / gray



6132-0154 / DDM06738 (SET)
PEI 4 mat | matt
gri închis / dark gray

- 30x30
- 
-  R10
-  B
-  V3
-  R



6485-0013 / DAK81739
PEI 4  R9  A
mat | matt
negru / black



6132-0158 / DDM06739(SET)
PEI 4 mat | matt
negru / black

- 80x80
-  R9
-  A
-  V3
-  R

- 30x30
- 
-  R10
-  B
-  V3
-  R