

# Cromatic Gloss



produs / product	cm	EN		m <sup>2</sup>		m <sup>2</sup>	kg	brutto kg
Faianță / Wall tile	50 x 25 x 0,9	EN 14411:2012, Annex K, BIII GL	11	1,38	45	62,10	21,0	970
Decor / Insert	50 x 25 x 0,9	EN 14411:2012, Annex K, BIII GL	10	1,25				
Brâu / Listel	50 x 2,5 x 0,9	EN 14411:2012, Annex K, BIII GL	20	0,25				
Gresie porțelanată rectificată / Porcelain rectified tile	60 x 15 x 0,9	EN 14411:2012, Annex G, BIa GL	10	0,9	18	43,2		

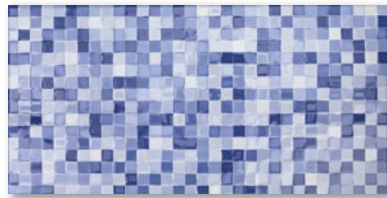


**2051-0210**  
alb/white | lucios/glossy

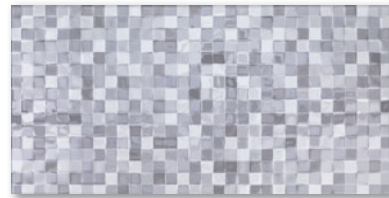
50 x 25



V1



**2051-0212**  
albastru/blue | lucios/glossy



**2051-0211**  
gri/gray | lucios/glossy

V2



**2651-0108**  
alb/white | lucios/glossy

50 x 25



V1



**2505-0121 Platină**  
platină/platinum | lucios/glossy

50 x 2.5



**6463-0045 Canada**  
bej/beige | mat/matt PEI 4

60 x 15




V3

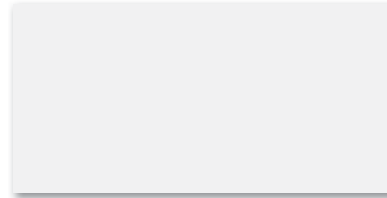




# Cromatic Gloss



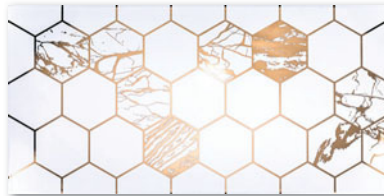
produs / product	cm	EN		m <sup>2</sup>		m <sup>2</sup>	kg	brutto kg
Faiantă / Wall tile	50 x 25 x 0,9	EN 14411:2012, Annex L, BIII GL	11	1,38	45	62,10	21,0	970
Decor / Insert	50 x 25 x 0,9	EN 14411:2012, Annex L, BIII GL	10 / 5 SET	1,25				
Gresie porțelanată rectificată / Rectified porcelain tile	60 x 30 x 0,9	EN 14411:2012, Annex G, Bla GL	7	1,26	40	50,40	23,6	960



50 x 25



**2051-0152**  
alb/white | lucios/glossy



**2651-0101**  
alb/white | lucios/glossy



**2651-0102**  
alb/white | lucios/glossy

50 x 25



**2651-0103**  
alb/white | lucios/glossy

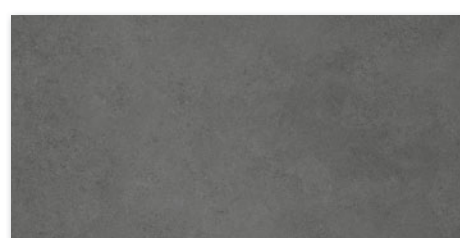
**SET**



**2651-0104**  
alb/white | lucios/glossy

**SET**

50 x 25



60 x 30



**6460-0270 Tanum**  
antracit/anthracite | mat/matt PEI 4